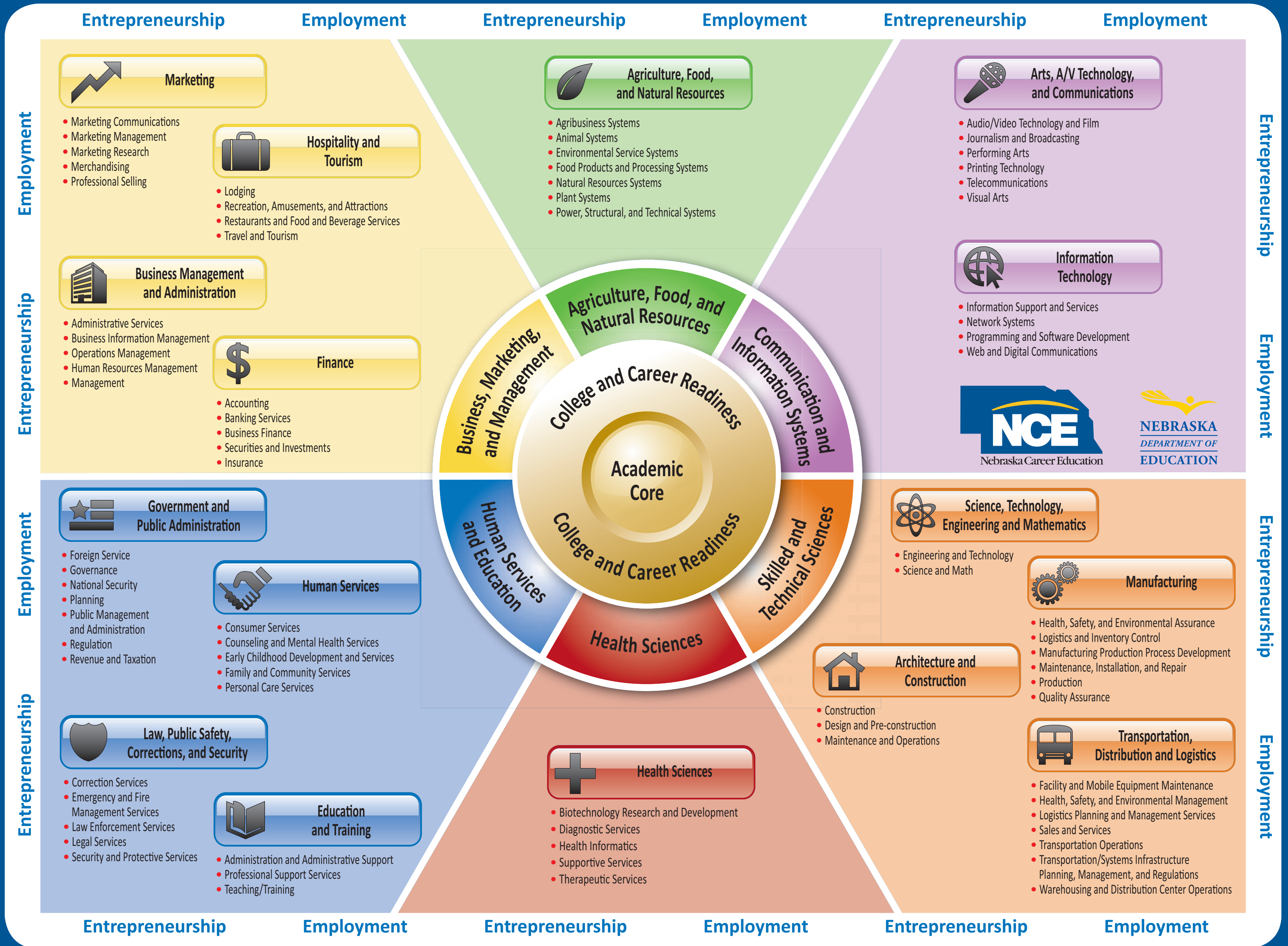


NEBRASKA CAREER EDUCATION MODEL



NEBRASKA CAREER READINESS STANDARDS

- ✓ Make sense of problems and persevere in solving them.
- ✓ Communicate effectively and appropriately.
- ✓ Employ appropriate academic and technical skills strategically.
- ✓ Attend to own career pathway.
- ✓ Contribute to success of community and employer.
- ✓ Reason through decisions critically and creatively.
- ✓ Look for opportunities to innovate and create.
- ✓ Model effective and ethical leadership.
- ✓ Adopt and apply technology to expedite results.
- ✓ Work productively with others demonstrating cultural awareness.
- ✓ Plan judiciously and follow through.
- ✓ Attend to personal well-being - including career, social, financial, physical and community.
- ✓ Construct understanding of global economy and American system of free enterprise.

Additional Resources: • www.education.ne.gov/nce • www.ctenebraska.org • www.nebraskacareerconnections.org • www.careerclusters.org

LEARNING THAT WORKS FOR NEBRASKA

Adapted from NASDCTE/NCTEF Career Clusters: Pathways to College and Career Readiness. Developed by the Nebraska Department of Education 2011.